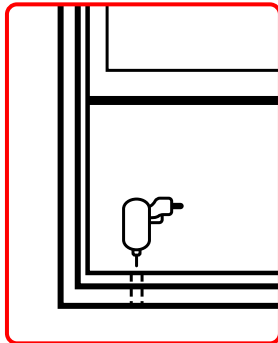
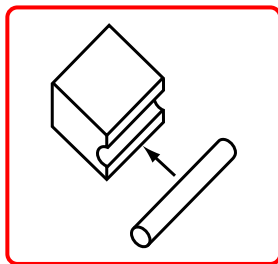


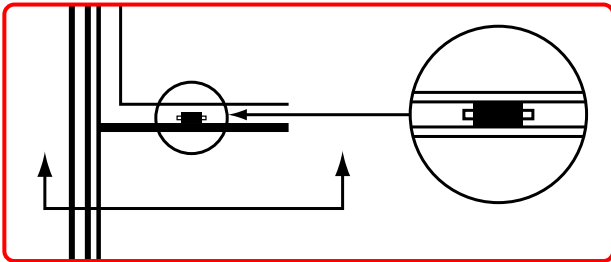
SNAP-IT Magnet Holder Installation Instructions



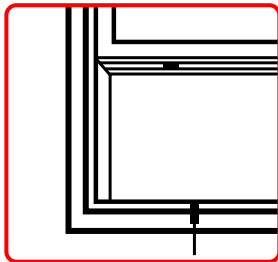
1. Raise bottom sash of double-hung window as far as possible.
2. Select a contact location on window sill approximately 3"-4" inches from left or right corner.
3. Drill a vertical hole, depending on diameter and length of switch being used.
4. Install switch.



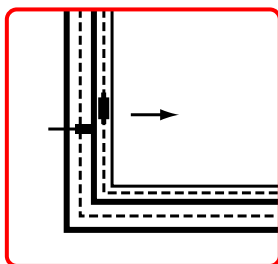
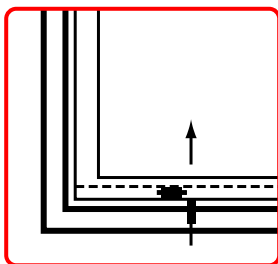
5. Place magnet into the SNAP-IT magnet holder.



6. With the bottom sash of the window raised, place SNAP-IT in between the form channel part.



7. Make sure before installing the SNAP-IT that it is placed at a 90° degree angle left or right of the switch.



8. This is how the SNAP-IT and switch should look in their closed position in either the vertical double-hung or horizontal sliding window.

REMEMBER: LINE UP END OF MAGNET WITH END OF SWITCH.

It's so fast and easy "It's a SNAP!"